



Structured Cabling System Certification Program

A Long-Term Investment That Is The Foundation Of Your Information Technology Strategy

Selecting an Belden IBDN 'Certified' Structured Cabling System is your guarantee of obtaining superior quality and performance, and your assurance that your investment will continue to meet your networking needs for the lifetime of the system. We guarantee it in writing for life!

Your structured cabling system should be an Belden IBDN 'Certified' Structured Cabling System from Belden.



The use of timely, accurate information is a key requirement for any successful business today. The caliber and performance of your Information Systems and the networks they run on can mean the difference between success and failure in today's competitive business environment. What is often overlooked, however, is the critically important role that your cabling system plays in supporting your Information Technology systems.

Your cabling infrastructure typically accounts for a small portion of your total IT systems and networking investment, yet an improperly designed or installed cabling system can be the cause of chronic network problems that may prevent you from ever realizing the true potential of your IT strategies.

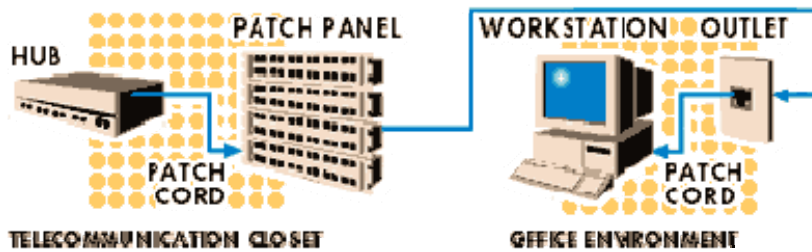
Moreover, the negative impact of an inadequate cabling infrastructure will only become more evident as you add new applications, more users and faster networking speeds throughout your business - both today and in the years to come. Now is the time to develop and implement an effective structured cabling decision into your overall IT systems and networking strategy.



What Is Structured Cabling ?

Structured cabling is a 'standards' based method of engineering and installing an integrated data, voice and video cabling system for your business. A properly designed and installed structured cabling system provides you with a cabling infrastructure that delivers predictable performance as well as flexibility to accommodate growth and change over an extended period of time. Additionally, a structured cabling system provides a uniform, open physical cabling topology that can simultaneously support multiple logical networking topologies for different applications such as Ethernet, token-ring, ATM or video.

END-TO-END SYSTEM



Your initial investment in a 'standards' based structured cabling system will return many benefits including an extended operational lifespan, predictable performance, manageability and growth. These benefits bring increased efficiency, improved productivity and reduced costs to you and your business.

What Are 'Standards' And Why Are They Important ?

Domestic and international standards organizations have been formed to ensure that manufactured products meet certain quality, safety and performance 'norms' for that category and class of product. Standards organizations such as ISO/IEC, TIA/EIA, CENELEC and CSA have created and published standards for structured cabling components and systems, and their specifications for Category 5, Category 5e and proposed specifications for Category 6 systems are widely used and accepted in the industry today.

Category 5 recommendations were developed in the early 1990's to define the use of low cost Unshielded Twisted Pair (UTP) cabling and components in a structured cabling system with performance parameters specified up to 100 MHz.

Category 5e specifications, also referred to as Enhanced Category 5, were developed at the end of the '90s to meet the demands of more sophisticated networking applications such as Gigabit Ethernet and to take advantage of significant advances in UTP cabling system engineering and manufacturing technologies. Today, the Category 5e standard is generally accepted as the minimum requirement for data applications in new cabling system installations, and it is anticipated that most standards organizations will recommend the use of the Category 5 standard in lieu of all earlier standards for voice networking applications.

The constant need for faster and more efficient network applications will, inevitably, result in the need for higher performance structured cabling systems. Standards organizations around the world are already working on developing a new Category 6 standard to define enhanced performance parameters beyond the current scope of Category 5e specifications. Current Category 6 proposals define channel bandwidth at 200 MHz or greater, providing at least twice the bandwidth of Category 5e systems and ensuring support for tomorrow's multi-gigabit networking applications.

For end-users, the challenge will be in selecting a structured cabling system that will meet both current and future needs. Whether those needs indicate the use of Category 5, Category 5e or Category 6 systems, end-users should look for systems that not only meet but exceed the specifications of each respective standard, thereby providing additional performance margins to accommodate the evolution of ever more demanding networking needs. End-users should look to a manufacturer with a proven track record in the area of standards compliance who is prepared to offer systems with performance guarantees that go beyond the minimums currently defined for each category of system. Belden and our family of high performance Belden IBDN Structured Cabling Systems offer customers a choice of systems to meet their performance requirements, backed up by the industry's most comprehensive product warranties and performance

assurances.

The Standards Conundrum: 1 + 1 (Doesn't Always) = 2

The value of selecting standards compliant structured cabling components is clear; however, specifying standards compliant components does not automatically guarantee that these components, once integrated into an end-to-end cabling system, will result in a standards compliant system. This is true for many reasons:

Not all products claiming standards compliance are created equal. There may be significant performance differences. A series of marginally compliant, unmatched components may not be capable of working together to deliver the performance that your network demands.

The interaction of unmatched components may limit or impair end-to-end system performance. In other words, a disparate group of Category 5, Category 5e or Category 6 compliant components may not result in a standards compliant system. In fact, it is possible to create a system whose overall performance will be worse than the performance of the weakest component. It doesn't average out - it actually gets worse!

The surest solution to this standards conundrum is to select a structured cabling system that is composed of components that have been designed and engineered to work together as an integrated system. Belden designs, engineers and manufactures all components necessary to install a fully integrated end-to-end structured cabling system. And only Belden's IBDN family of structured cabling systems provides you with a choice of four fully integrated system configurations to best meet your specific networking needs.

What Is An Belden IBDN Certified Structured Cabling System?

We have emphasized the importance of installing standards compliant, integrated structured cabling systems rather than an assortment of disparate components. Our Belden IBDN family of structured cabling systems provides you with a choice of four levels of system performance to best meet your needs; each composed of fully integrated, standards compliant products. Whether you select Belden IBDNPlus Category 5 System, our Category 5e Belden IBDN System1200, our Category 6 Belden IBDN System 2400, or our industry leading "Beyond Category 6™" Belden IBDN System 4800LX you may have your Belden IBDN installation Certified by Belden CDT. Once Certified, your Belden IBDN Structured Cabling System will be registered and supported by the industry's most comprehensive warranty program, including a 25 year product warranty and a lifetime Application Assurance Program.

Quality Components

You need to have superior quality components that have been designed and engineered to exacting specifications, and then manufactured under the most stringent quality controls.

As one of the world's largest manufacturers of structured cabling systems, Belden's technology group is one of the industry's most experienced design and engineering teams, with many technology innovations and patents to their credit.

Belden's manufacturing facilities are among the most modern in the world, and all Belden factories are certified to ISO 9001, the most stringent quality standard in the world.

Quality System Design

Belden produces and publishes detailed Belden IBDN Design Guidelines for use by our Certified System Vendors (CSVs). These Design Guidelines have been developed to optimize your Belden IBDN Structured Cabling System design, ensuring that your Belden IBDN Structured Cabling System provides you with optimum performance and reliability today and in the years to come.

Quality Installation and Service

The combination of superior quality components and detailed system design guidelines are key elements for any successful installation. To take best advantage of these, your Belden IBDN Structured Cabling System needs to be installed and serviced by skilled and experienced contractors, with complete training for Belden IBDN Structured Cabling Systems. Belden has developed a global network of Certified Systems Vendors (CSVs) who have been fully trained on the design, installation and maintenance of Belden IBDN Structured Cabling Systems. Whether you're installing a Belden IBDN System for one office, an entire building, or a multi-building campus locally, nationally or internationally, the use of an authorized Belden IBDN Certified System Vendor is your assurance of a quality installation and superior post installation maintenance.

25 Year Product Warranty

The components installed in your Belden IBDN Certified Structured Cabling System will be warranted for a period of 25 years from date of installation against defects in materials and workmanship. For the same period, these components are warranted to meet or exceed the specifications of standards organizations including ISO/IEC CENELEC and TIA/EIA for the category of Belden IBDN system installed.



If a Belden IBDN component in an Belden IBDN Certified System fails during the warranty period, Belden and your Certified System Vendor will repair or replace the failed component, including labor, at no cost to the original registered owner of the Belden IBDN Certified Structured Cabling System.

Lifetime Application Assurance

Your Belden IBDN Certified Structured Cabling System is also guaranteed to operate the applications which the System was originally designed to support, as well as any new applications, for as long as you own the System in its original place of installation. New applications are defined as any application introduced in the future by recognized standards organizations or user forums that use the TIA/EIA-568 A or ISO/IEC IS 11801 component and link/channel specifications for cabling.

Additionally, your Belden IBDN Certified System is guaranteed to provide specific minimum Power Sum bandwidth capabilities and to support specific minimum data rates as indicated in the

Belden IBDN Certified System Performance & Warranties Profile published for each system configuration.

If your Belden IBDN Certified Structured Cabling System fails to operate an installed or future application on a system-wide basis, or fails to provide the transmission performance parameters detailed in the applicable Performance & Warranties Profile, Belden and your CSV will repair or replace the Belden IBDN Certified System as required, including labor, at no cost to the original registered owner. If the failure to operate an installed or future application is attributable to the failure of specific Belden IBDN components, Belden and your CSV will take corrective action and remedy the failure in accordance with the terms and conditions of the Belden IBDN Certified System - 25 Year Product Warranty.

As with all warranties and guarantees, some conditions apply. The Performance & Warranties Profile for each level of Belden IBDN Certified System will provide additional details, and you are invited to contact your Belden regional office to learn more about our Belden IBDN Certified Systems.

Related Information:

CERTIFICATION REQUEST FORM

The certification request form can be accessed in the Partner sections. To access this form you must be a Partner and have access to the Partners Sections. To locate the form [log on to the partner section](#) and click on the "Belden IBDN Certification" button on the blue sidebar.

BROCHURES

WARRANTIES