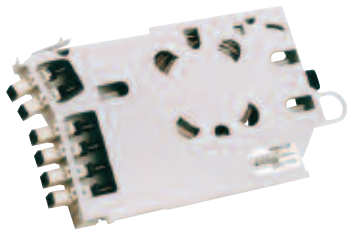


DATA Sheet

FiberExpress Manager Connector Modules



FiberExpress Manager Connector Module

The connector module is the basic building block of the FiberExpress Manager. It is designed with our unique release mechanism that allows it to slide from the shelf like a PC card, easing management of patch cords.

Features & Benefits

- > Wide connector options offering to address all possible configurations
- > Upper connectors mounted at an angle – preventing patch cord bend radius violation
- > Fiber Slack – is contained within individual connector modules. Offers easy management and protection of fibers
- > Termination preferences – choose traditional field termination methods (such as field connector or fusion splice) or use Belden CDT's pre-terminated, MPO connectorized modules. Use the method most appropriate to your project, and save time & money
- > With the integrated splice holder within the module, no need for cumbersome splice trays
- > Highest density and manageability in the industry, optimizing space and Moves, Adds and Changes (MACs) in the telecommunications room.

Applications

- > Backbone termination in Telecommunications Rooms or Main Distribution Rooms
- > Telco, Co-location, Point of Presence (POP), CLEC & CATV fiber deployment
- > Fiber interconnect cabinet
- > Cross-connect or interconnect configuration.

Technical Specifications

- > Standard connectors: ST type, 568SC, SC, FC
- > Small form-factor connectors: MT-RJ, LC
- > Fiber types: Singlemode and Multimode
- > Fiber capacity: 6 fibers, 8 fibers, 12 fibers and 24 fibers (LC only)
- > Termination options: Field termination, splice or factory terminated using MPO connector at back of module. Module can be ordered with 12 color-coded (as per ANSI/TIA/EIA-568-B) pre-loaded pigtails and splice holders ready for splicing
- > Transition management: Splice holder or breakout kit (Not included in the FiberExpress connector module).

ST type, FC and SC Duplex

MPO Connectors	Multimode	Singlemode
Insertion Loss (Total both ends)	1.50 dB max.	1.25 dB max.
Reflectance	< -20 dB	< -55 dB

MT-RJ

MPO Connectors	Multimode	Singlemode
Insertion Loss (Total both ends)	1.40 dB max.	1.40 dB max.
Reflectance	< -20 dB	< -45 dB

LC

MPO Connectors	Multimode	Singlemode
Insertion Loss (Total both ends)	1.15 dB max.	1.15 dB max.
Reflectance	< -20 dB	< -50 dB

Note: Designed as per TIA/EIA-568-B.3.



DATA Sheet

FiberExpress Manager Connector Modules

Installation Tips

- > With the 24 fiber LC FiberExpress Manager Module, it is not possible to use pigtailed.

Packaging

Regular version:

- > Each module is supplied with a cable tie
- > Individually packaged in a clear plastic bag inserted in a box

- > Standard shipping packaging is four boxes per carton.

Pre-terminated version:

- > Individually packaged in a clear plastic bag inserted in a box
- > Standard shipping packaging is one box
- > A test report is included.

For More Information

For any other product information call: 1-800-BELDEN-1 or visit us at www.Belden.com

All information is subject to change without notice, since Belden reserves the right to change its products as progress in engineering and manufacturing methods or other circumstances may warrant.

Ordering Information

FiberExpress Manager Connector Module

DESCRIPTION	ORDERING NUMBER	ORDERING NUMBER
	Metal Sleeve, Multimode	Zirconia Ceramic, Singlemode
ST type, 6 fibers	AX101089	AX100936
ST type, 12 fibers	AX101187	AX101186
SC Simplex, 6 fibers		AX100943
SC Duplex, 6 fibers	AX101092	AX100944
SC Duplex, 8 fibers	AX101513	AX101512
SC Duplex (ST in), 12 fibers	AX101120	AX101119
SC Duplex, 12 UPC pigtailed		AX101715
SC Duplex, 12 fibers	AX101714	AX101713
LC, 8 fibers	AX101621	AX101620
LC, 12 fibers	AX101528	AX101527
LC, 24 fibers, NEW	AX102306	AX102305
FC, Singlemode/Multimode, 6 fibers		AX100937
FC, Singlemode/Multimode, 8 fibers		AX101482

DESCRIPTION	ORDERING NUMBER	ORDERING NUMBER	ORDERING NUMBER
	Multimode 62.5 μm	Multimode 50 μm	Singlemode
MPO(m)-ST type, 6 pre-terminated	AX101449	AX101450	AX101451
MPO(m)-ST type, 12 pre-terminated	AX101189	AX101190	AX101188
MPO(m)-SC Duplex, 6 pre-terminated	AX101453	AX101454	AX101452
MPO(m)-SC Duplex, 8 pre-terminated	AX101515	AX101516	AX101514
MPO(m)-SC Duplex, 12 pre-terminated	AX101091	AX101114	AX101090
MPO(m)-MT-RJ(m), 12 pre-terminated	AX101525	AX101526	AX101524
MPO(m)-LC, 8 pre-terminated	AX101623	AX101624	AX101622
MPO(m)-LC, 12 pre-terminated	AX101530	AX101531	AX101529
MPO(m)-LC, 24 pre-terminated, NEW	AX102309	AX102308	AX102307
MPO(m)-FC, 8 pre-terminated	AX101587	AX101588	AX101586
	Beige, Multimode	Blue, Singlemode	
MT-RJ, 12 fibers	AX101096	AX101581	