



# HIRSCHMANN

A BELDEN BRAND

## Product Bulletin

PB 1063AG

### Industrial HiVision from Hirschmann™

The HiFusion tool contained in Industrial HiVision network management software enables it to set new standards in terms of network visibility and availability.



**Industrial HiVision not only allows all managed switches from Hirschmann™ and GarrettCom® to be monitored, but in fact any SNMP-enabled device, irrespective of the manufacturer. In addition, the MultiConfig™ function enables multiple network nodes to be configured quickly and consistently.**

- All network infrastructure and terminal equipment that supports SNMP can be integrated, including any device-specific properties
- Using MultiConfig™, the same parameters can be configured simultaneously for multiple devices, both when commissioning the system and during subsequent live operation
- The network topology is automatically recognized and accurately visualized, including unmanaged switches and hubs

Since its first release, Industrial HiVision has undergone continual development, with a focus on the functionality required in an automation environment. As a result, the current release offers a rich feature set and is available for Windows and Linux operating systems.

For example, it can be used for reliable and convenient management of industrial networks, from configuring network nodes and visualizing network topologies, to detailed status displays.

Therefore, the network administrator has access at all times to the information needed for efficient network management, accurate location faults and maintenance work. In short, Industrial HiVision is a core component for enhancing the availability of data communication.

### Applications

Industrial HiVision can be used wherever networks have to meet the highest requirements in terms of availability, whether in the automotive industry or in the energy or transport sectors. Industrial networks are becoming increasingly complex, so to ensure efficient administration, Industrial HiVision allows distributed management with hierarchical master/slave stations. Most importantly, this software requires no special IT knowledge. The wizard guides you easily and systematically through the network management setup process.

**A new product to serve your needs.  
Be certain.**



# HIRSCHMANN

A BELDEN BRAND

Industrial HiVision offers a host of functions to meet the special requirements of industrial network management.

## Industrial HiVision from Hirschmann™

### Customer Benefits

The HiFusion tool in Industrial HiVision enables the integration of SNMP-enabled devices from different manufacturers into a single network management application: switches, PLCs, I/O modules and HMI panels. Therefore, this software offers maximum network visibility. Using MultiConfig™, hundreds of devices can be configured simultaneously, even while they are in operation. This not only saves time, but also ensures consistent configuration of the network infrastructure. Since the network topology is recognized automatically, all the network nodes and links are accurately displayed on-screen, including any unmanaged switches and hubs. This means that the display always shows the exact network status, and faults can be located quickly. Industrial HiVision also facilitates cost-effective solutions, because clients are made available free of charge and license fees are payable only for the server.

See for yourself just how powerful our software is. You can download Industrial HiVision free of charge from [www.hivision.de](http://www.hivision.de) and test it for 30 days – or even longer on request.

### Network Visualization and Configuration Software

Industrial HiVision is designed specifically for automation networks. The built-in SNMP/OPC server enables network supervision to be integrated with ease into SCADA applications. The graphical user interface, which supports numerous languages, is available as an ActiveX control. A DTM interface enables seamless operation in FDT applications. The standardized LLDP protocol is used to accurately visualize the network topology using graphical displays. The software also offers features such as customized menus, redundant servers, web browser client, VLAN viewer, MIB browser, Edit and Run mode, long-term trending, comprehensive export functions, asset management and centralized license management. In addition, the availability of network paths can be calculated, timed actions performed, event logs displayed on smartphones and tablets, user-specified data recorded, and reports created.

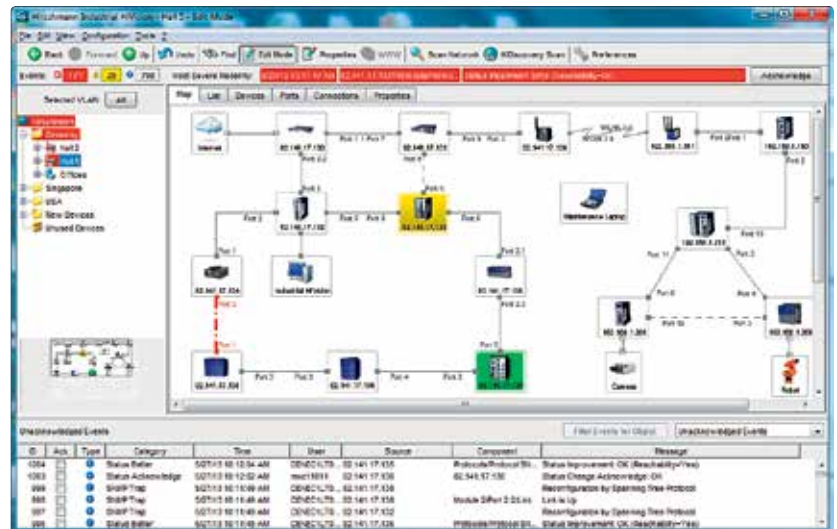


# Be Certain with Belden



## Benefits at a Glance

- HiFusion allows all SNMP-enabled devices to be integrated into the management system, including any device-specific properties
- Using MultiConfig™, hundreds of devices can be configured simultaneously – both when commissioning the system and during subsequent live operation
- Network topology is automatically recognized and accurately visualized, including any unmanaged switches and hubs
- Distributed network management with hierarchical master/slave stations
- Setup wizard makes it easy to set up the network management and – if necessary – quickly adjust its configuration
- SNMP/OPC server for integrating SCADA applications
- Graphical user interface available as an ActiveX control
- DTM interface enables seamless operation in FDT applications
- User interface supports numerous languages
- Versions available for Windows and Linux operating systems
- Free 30-day trial
- Perfectly adapted to the entire Hirschmann™ and GarrettCom® product portfolio



Name	Status
All Objects	✓
192.168.1.200	✓
192.168.1.201	✓
192.168.1.202	✓
192.168.1.203	✓
192.168.1.204	✓
192.168.1.205	✓
192.168.1.208	✓
192.168.1.209	✓
192.168.1.212	✓
192.168.1.214	✓
192.168.1.213	✓

**Password (SNMP V3) - Read-only password (user)**

Password:

Repeat:

Data encryption

**Password (SNMP V3) - Read-write password (admin)**

Password:

Repeat:

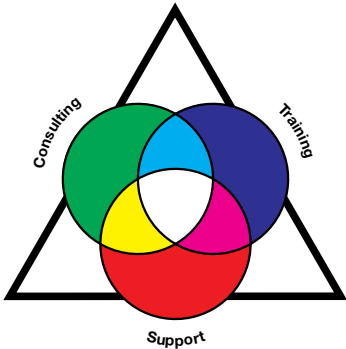
Data encryption

Buttons: Write, Reload, Cancel, Help



# HIRSCHMANN

A BELDEN BRAND



## The Belden® Competence Center

As the complexity of communication and connectivity solutions has increased, so have the requirements for design, implementation and maintenance of these solutions. For users, acquiring and verifying the latest expert knowledge play a decisive role in this. As a reliable partner for end-to-end solutions, Belden offers expert consulting, design, technical support, as well as technology and product training courses from a single source: Belden Competence Center. In addition, we offer you the right qualification for every area of expertise through the world's first certification program for industrial networks. Up-to-date manufacturer's expertise, an international service network and access to external specialists guarantee you the best possible support for products from Belden®, GarrettCom®, Hirschmann™ and Lumberg Automation™. Irrespective of the technology you use, you can rely on our full support – from the implementation to the optimization of every aspect of daily operations.

### Always Stay Ahead with Belden

In a highly competitive environment, it is crucial to have reliable partners who are able to add value to your business. When it comes to signal transmissions, Belden is the number one solutions provider. We understand your business and want to know your specific challenges and targets to see how effective signal transmission solutions can push you ahead of the competition. By combining the strengths of our four leading brands, Belden®, GarrettCom®, Hirschmann™ and Lumberg Automation™, we are able to offer the solution you need. Today it may be a single cable, a switch or a connector, thus solving a specific issue; tomorrow it can be a complex range of integrated applications, systems and solutions.

### About Belden

Belden Inc., a global leader in high quality, end-to-end signal transmission solutions, delivers a comprehensive product portfolio designed to meet the mission-critical network infrastructure needs of industrial, enterprise and broadcast markets. With innovative solutions targeted at reliable and secure transmission of rapidly growing amounts of data, audio and video needed for today's applications, Belden is at the center of the global transformation to a connected world. Founded in 1902, the company is headquartered in St. Louis, USA, and has manufacturing capabilities in North and South America, Europe and Asia.

For more information, visit us at [www.beldensolutions.com](http://www.beldensolutions.com) and follow us on [Twitter@BeldenInc](https://twitter.com/BeldenInc).

Product Overview

