

Installation Guide

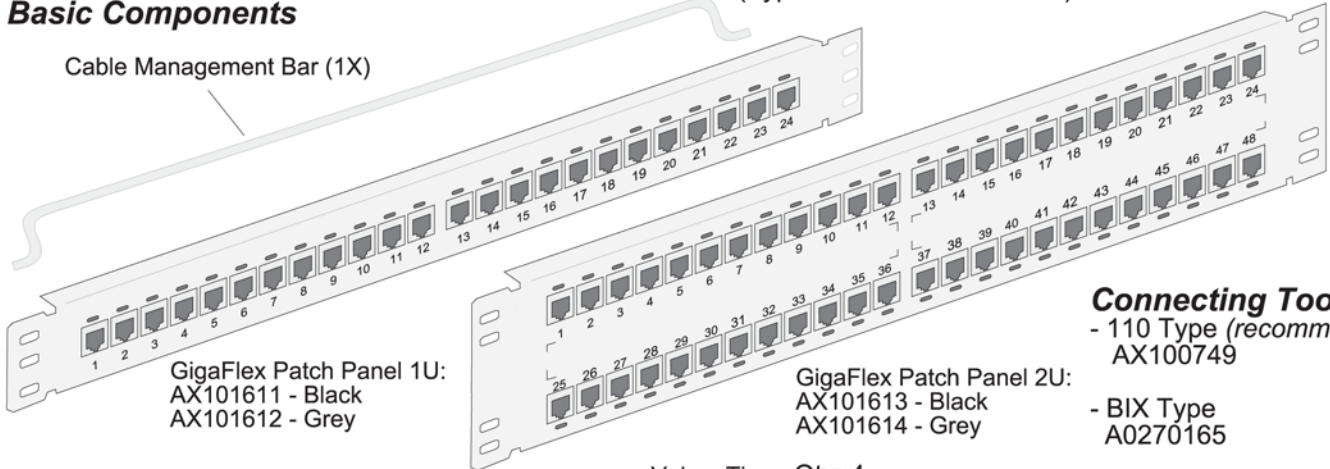
GigaFlex PS6+ Patch Panel mounting on 19" racks

Doc # PX102196 Version A

1 of 2 pages

GigaFlex PS6+ Patch Panel Basic Components

Select the required components to your workplan
(Typical items shown below)



Connecting Tools

- 110 Type (recommended)
AX100749
- BIX Type
A0270165

Standard Tools

- Phillips screwdriver
- Cable stripper
- Wire stripper

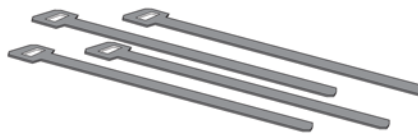
Reference Documents

PX101565
- GigaFlex
Installation Guide

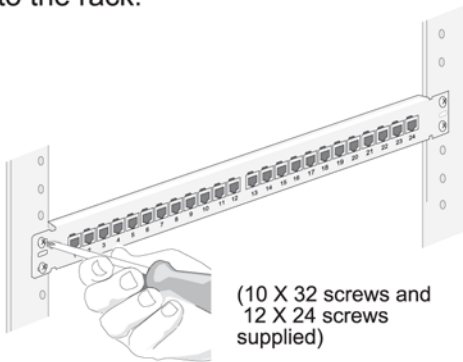
Machine Screws:
- 10 x 32 Qty: 4
- 12 x 24 Qty: 4



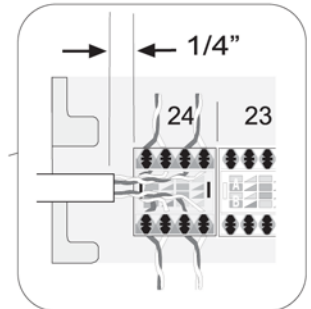
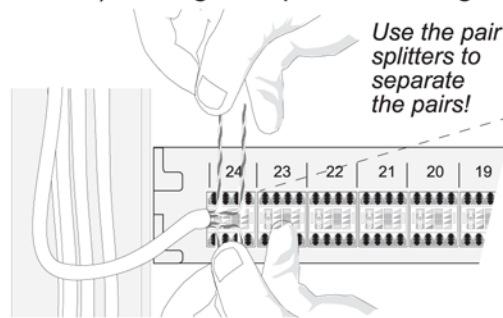
Velcro Ties - Qty: 4



1. Using the appropriate screws, attach the Patch Panel Assembly to the rack.

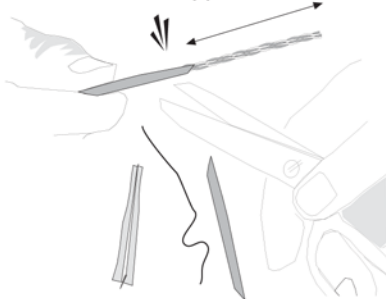


3. Using the color code (printed on each conductor), arrange the pairs for wiring.

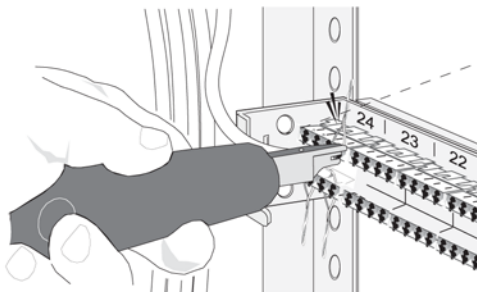


Note: These instructions are specific to the 110 type connecting tool. Refer to the GigaFlex Installation Guide (PX101565) to terminate this panel using the BIX Tool.

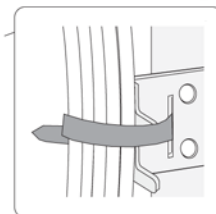
2. Prepare cable for termination.
approx. 3"



4. Using the 110 Connecting Tool, terminate the first four pairs onto the first module.



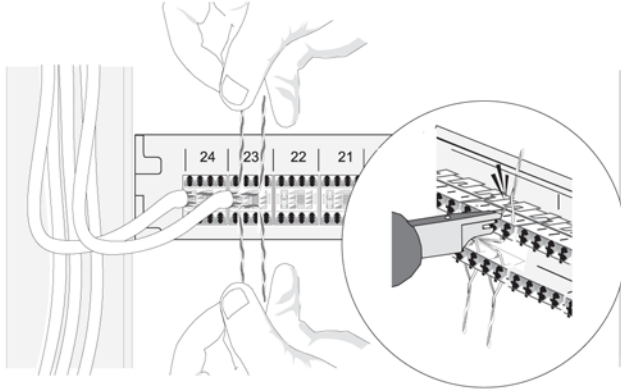
Installer's Tip



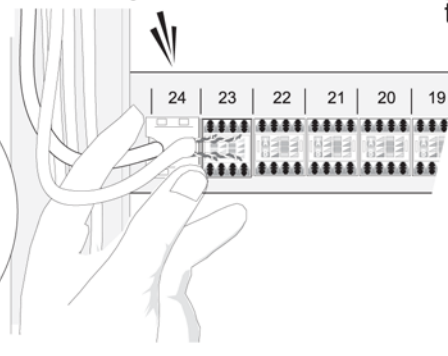
You can temporarily use a Velcro Tie to support the cables on the patch panel, using the slot as an anchor point.

Important:
Always respect minimum bend radius of the cable!

5. Prepare and terminate the **second module**.



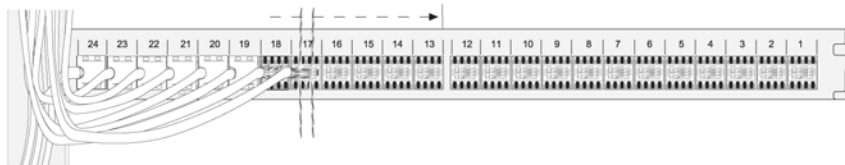
6. Snap on a protective cover onto the **first module assembly**.



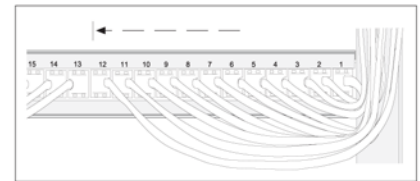
7. **Always** snap the protective cover onto the previous assembly **after** terminating each cable.



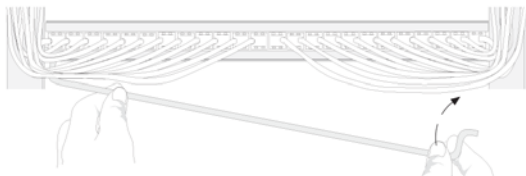
8. Continue assembling the **left side**, in this sequence, to the center of the panel.



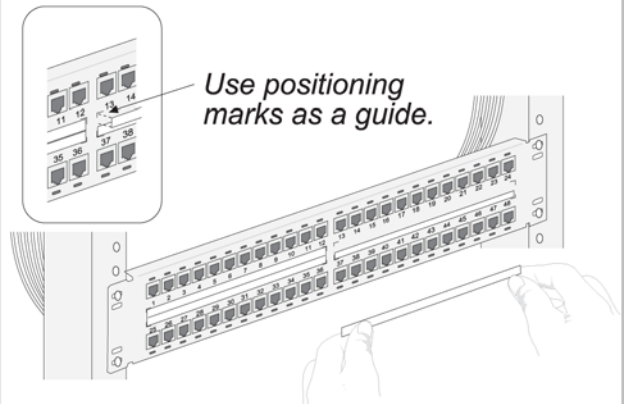
9. Repeat the assembly sequence for the **right side**, moving inward to the center of the panel.



10. Guide the Cable Management Bar under the cables, and secure in the lower mounting holes of the patch panel.



12. Install Port I.D. Labels.



11. Secure cables with Velcro Ties.



A completed GigaFlex Patch Panel Assembly

Installer's Tip

To facilitate wiring a **2U Type** GigaFlex PS6+ Patch Panel, the following procedure is recommended:

1. Terminate the **upper row**, as previously shown.
2. Guide the bar under the cables and **temporarily install** in the **upper holes**.
3. Terminate the **lower row**.
4. **Reinstall** the bar in the **holes at the middle position**.
5. Secure cables with Velcro Ties.

