

Installation Guide

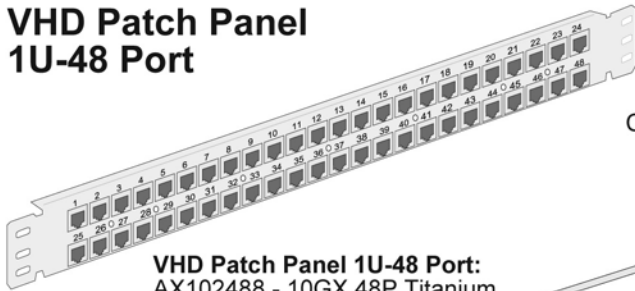
BELDEN

VHD Patch Panel mounting on 19" racks

Version 02.00 2007 PX104000

1 of 2 pages

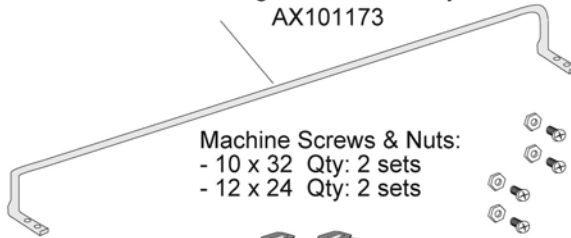
VHD Patch Panel 1U-48 Port



VHD Patch Panel 1U-48 Port:
AX102488 - 10GX 48P Titanium
AX102487 - 10GX 48P Black
AX102490 - PS6+ 48P Black
AX103489 - PS5E 48P Black

Basic Components

Cable Management Bar Kit Qty:1
AX101173



Machine Screws & Nuts:
- 10 x 32 Qty: 2 sets
- 12 x 24 Qty: 2 sets

Select the required components to your workplan (Typical items shown here)

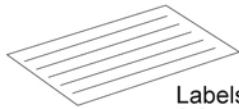
GigaFlex Tool:
AX100749 (or equivalent)

Standard Tools

- Phillips screwdriver
- Cable stripper
- Wire stripper

Reference Documents

- PX103329
- GigaFlex Installation Guide PX103771
- 10GX Installation Guide



Labels
0.3 x 8.3
Qty: 1 (6 rows)

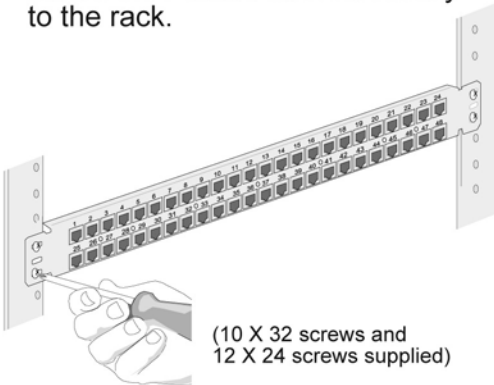
Machine Screws:
- 10 x 32 Qty: 4
- 12 x 24 Qty: 4



Velcro Ties - Qty: 4
AX100784

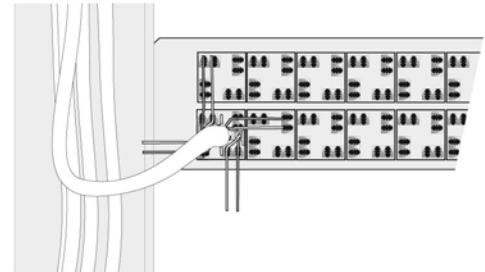


1. Using the appropriate screws, attach the Patch Panel Assembly to the rack.



(10 X 32 screws and
12 X 24 screws supplied)

2. Prepare cable for termination.



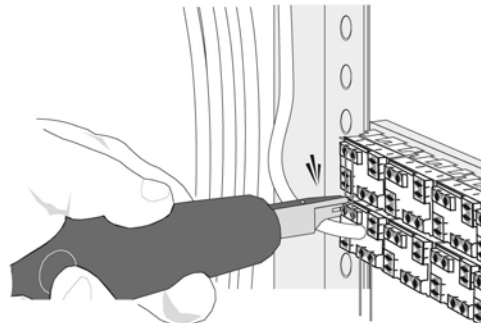
Note: Refer to *Installation Guide PX103771* for 10GX application, and *Installation Guide PX103329* for PS6+ and PS5E applications.

10GX modules are shown throughout this Installation Guide.

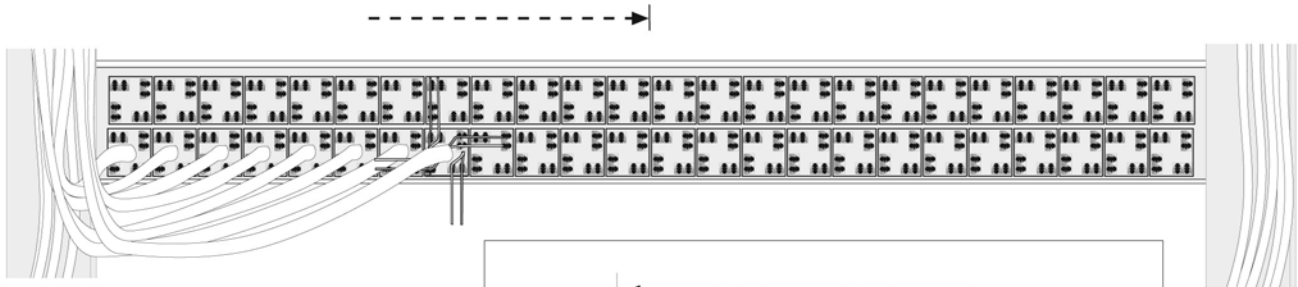
3. Wire Termination

Using the GigaFlex Connecting Tool, terminate the first four pairs onto the **first lower module**.

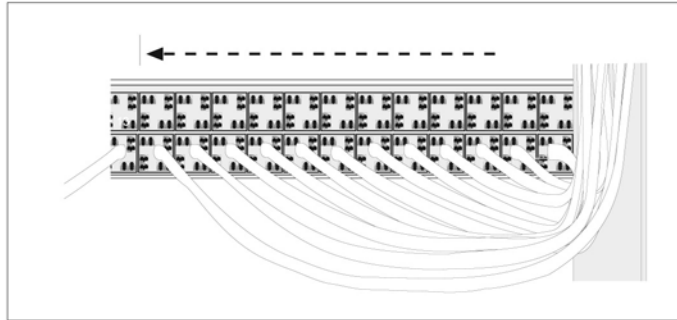
Important:
Always respect minimum bend radius of the cable!



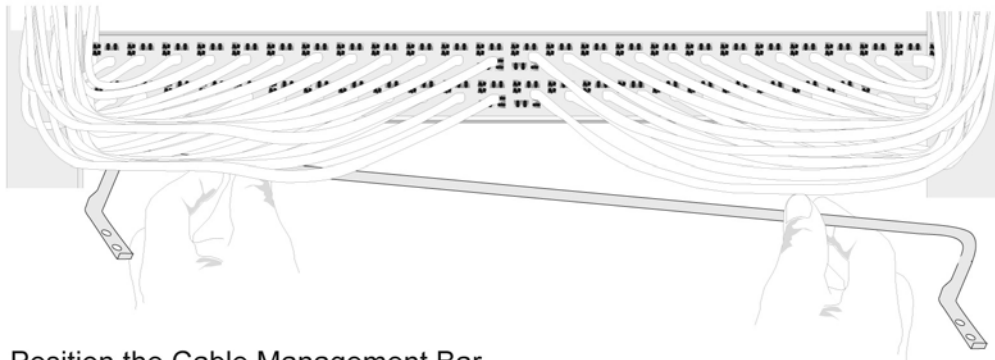
4. Continue assembling the **left lower side**, in this sequence, to the center of the panel.



5. Repeat the assembly sequence for the **right lower side**, moving inward to the center of the panel.



6. Terminate the **upper row** in the same sequence as shown above.



(10 X 32 screws and 12 X 24 screws supplied)

7. Position the Cable Management Bar under the cables, and using the appropriate screws, attach to the rack.

8. Secure cables to the bar with the Velcro ties.

