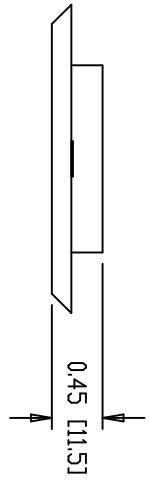
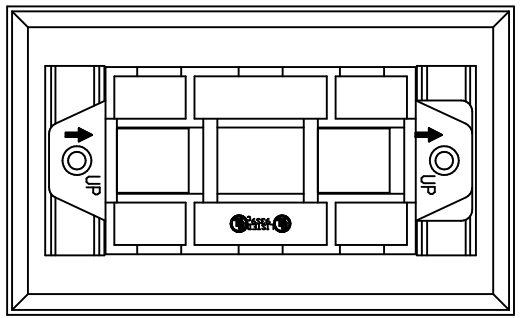
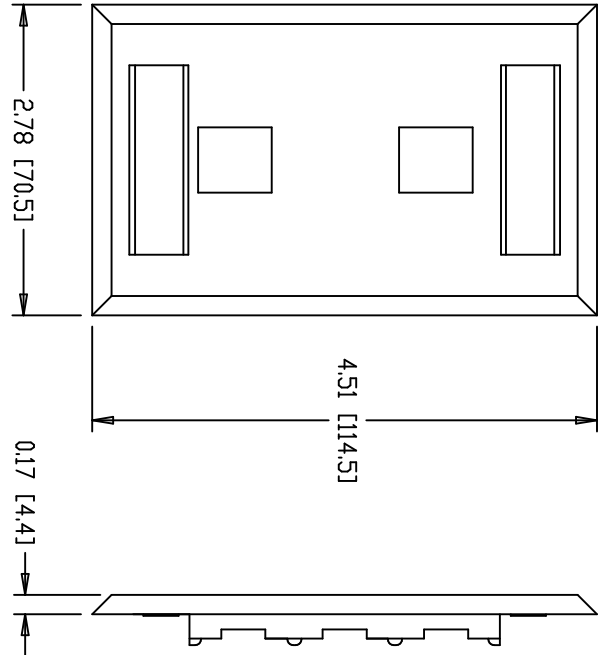


NOTES
 01. ALL DIMENSIONS ARE IN INCHES AND MILLIMETERS
 02. ALL DIMENSIONS SHOWN AS REFERENCE ONLY



BRUSHING
 DIRECTION



INFORMATION SUR LE PRODUIT	
PRODUCT INFO	
NUMERO DE PIÈCE PART NUMBER	DESCRIPTION
AX104231	FACEPLATE STAINLESS STEEL SINGLE GANG 2-PART FLUSH WITH ID WINDOWS

PROPRIÉTÉ INTELLECTUELLE
 L'information contenue dans ce document est la propriété de BELDEN Inc. Toute réimpression ou utilisation non autorisée sans la permission écrite de la compagnie est formellement interdite. Toute personne qui contrevient à ces conditions de confidentialité sera poursuivie devant les tribunaux et sera tenue responsable de tous dommages et intérêts encourus. Toute divulgation à toute tierce personne est formellement interdite.
PROPRIETARY INFORMATION
 The information contained in this document is the property of BELDEN INC. Any reproduction or unauthorized use without the written permission of BELDEN INC. is strictly prohibited. Any person who violates these conditions of confidentiality will be held liable for all damages and interests incurred. Any disclosure to any third parties and use shall use same for operating and maintenance purposes only.

DATE	2009 OCT 28
REVISED BY	APP -
REVISED BY	REV A

PAGE / SHEET	1 DE 1
DESIGN NOM A L'ÉCHELLE	DESIGN NAME AND ITS SCALE
TITRE / FACE PLATE	STAINLESS STEEL WITH ID WINDOWS
NUMERO DE BREVET/DRAWING NUMBER	BELDEN-323