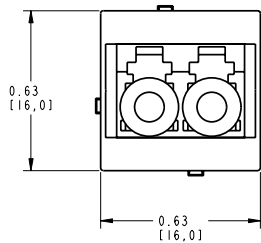
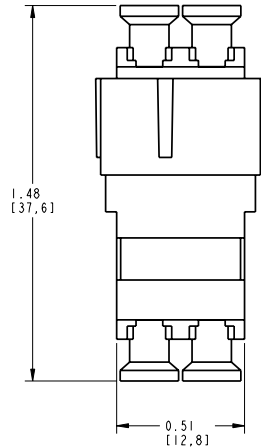


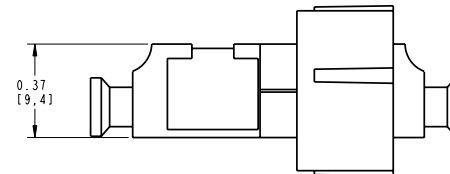
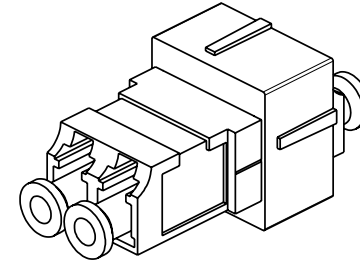
INFORMATION SUR LE PRODUIT
PRODUCT INFO

NUMÉRO DE PIÈCE PART NUMBER	CODE DU PRODUIT PRODUCT CODE	DESCRIPTION
AX102089	NXMK1MM-01	MDVO LC KEYED DUP MM (RD-GY)
AX102090	NXMK2MM-01	MDVO LC KEYED DUP MM (GN-GY)
AX102091	NXMK3MM-01	MDVO LC KEYED DUP MM (YL-GY)
AX102092	NXMK4MM-01	MDVO LC KEYED DUP MM (BK-GY)
AX102093	NXMK5MM-01	MDVO LC KEYED DUP MM (OR-GY)
AX102094	NXMK6MM-01	MDVO LC KEYED DUP MM (BL-GY)
AX102095	NXMK1MM-02	MDVO LC KEYED DUP MM (RD-AL)
AX102096	NXMK2MM-02	MDVO LC KEYED DUP MM (GN-AL)
AX102097	NXMK3MM-02	MDVO LC KEYED DUP MM (YL-AL)
AX102098	NXMK4MM-02	MDVO LC KEYED DUP MM (BK-AL)
AX102099	NXMK5MM-02	MDVO LC KEYED DUP MM (OR-AL)
AX102100	NXMK6MM-02	MDVO LC KEYED DUP MM (BL-AL)
AX102101	NXMK1MM-03	MDVO LC KEYED DUP MM (RD-WH)
AX102102	NXMK2MM-03	MDVO LC KEYED DUP MM (GN-WH)
AX102103	NXMK3MM-03	MDVO LC KEYED DUP MM (YL-WH)
AX102104	NXMK4MM-03	MDVO LC KEYED DUP MM (BK-WH)
AX102105	NXMK5MM-03	MDVO LC KEYED DUP MM (OR-WH)
AX102106	NXMK6MM-03	MDVO LC KEYED DUP MM (BL-WH)
AX102107	NXMK1MM-04	MDVO LC KEYED DUP MM (RD-BK)
AX102108	NXMK2MM-04	MDVO LC KEYED DUP MM (GN-BK)
AX102109	NXMK3MM-04	MDVO LC KEYED DUP MM (YL-BK)
AX102110	NXMK4MM-04	MDVO LC KEYED DUP MM (BK-BK)
AX102111	NXMK5MM-04	MDVO LC KEYED DUP MM (OR-BK)
AX102112	NXMK6MM-04	MDVO LC KEYED DUP MM (BL-BK)
AX103010	NXMK7MM-01	MDVO LC KEYED DUP MM (VL-GY)
AX103011	NXMK8MM-01	MDVO LC KEYED DUP MM (RO-GY)
AX103012	NXMK9MM-01	MDVO LC KEYED DUP MM (AO-GY)
AX103013	NXMKAMM-01	MDVO LC KEYED DUP MM (BR-GY)
AX103014	NXMKBMM-01	MDVO LC KEYED DUP MM (SL-GY)
AX103015	NXMKCMM-01	MDVO LC KEYED DUP MM (WH-GY)
AX103016	NXMK7MM-02	MDVO LC KEYED DUP MM (VL-AL)
AX103017	NXMK8MM-02	MDVO LC KEYED DUP MM (RO-AL)
AX103018	NXMK9MM-02	MDVO LC KEYED DUP MM (AO-AL)
AX103019	NXMKAMM-02	MDVO LC KEYED DUP MM (BR-AL)
AX103020	NXMKBMM-02	MDVO LC KEYED DUP MM (SL-AL)
AX103021	NXMKCMM-02	MDVO LC KEYED DUP MM (WH-AL)
AX103022	NXMK7MM-03	MDVO LC KEYED DUP MM (VL-WH)
AX103023	NXMK8MM-03	MDVO LC KEYED DUP MM (RO-WH)
AX103024	NXMK9MM-03	MDVO LC KEYED DUP MM (AO-WH)
AX103025	NXMKAMM-03	MDVO LC KEYED DUP MM (BR-WH)
AX103026	NXMKBMM-03	MDVO LC KEYED DUP MM (SL-WH)
AX103027	NXMKCMM-03	MDVO LC KEYED DUP MM (WH-WH)
AX103028	NXMK7MM-04	MDVO LC KEYED DUP MM (VL-BK)
AX103029	NXMK8MM-04	MDVO LC KEYED DUP MM (RO-BK)
AX103030	NXMK9MM-04	MDVO LC KEYED DUP MM (AO-BK)
AX103031	NXMKAMM-04	MDVO LC KEYED DUP MM (BR-BK)
AX103032	NXMKBMM-04	MDVO LC KEYED DUP MM (SL-BK)
AX103033	NXMKCMM-04	MDVO LC KEYED DUP MM (WH-BK)



NOTES

01. ALL DIMENSIONS ARE IN INCHES AND [MILLIMETERS].
02. ALL DIMENSIONS SHOWN AS REFERENCE ONLY



DATE 2008 JUL 08

DES/DRW APP REV

THIS DRAWING
SUPERSEDES 1BDN301

QA BL A

BELDEN
SENDING ALL THE RIGHT SIGNALS™

PAGE / SHEET 1 DE/OF 1

DESSIN NON À L'ÉCHELLE
DRAWING NOT TO SCALE

TITRE / TITLE
**MDVO LC KEYED
DUP MM**

NUMERO DE DESSIN/DRAWING NUMBER

BELDEN-064

PROPRIÉTÉ INTELLECTUELLE

L'information contenue dans ce document est la propriété de BELDEN Inc. Sauf si spécifié par une autorisation écrite de BELDEN Inc, la personne qui consulte ce document : (1) doit garder confidentielle toute l'information contenue dans ce document et doit protéger en tout ou en partie toute divulgation à toute tierce personne et (2) doit utiliser l'information pour la production ou la mise à jour.

PROPRIETARY INFORMATION

The information contained in this document is the property of BELDEN INC. Except as specifically authorized in writing by BELDEN, INC, the holder of this document: (1) shall keep all information contained herein confidential and shall protect same in whole or in part from disclosure and dissemination to all third parties and (2) shall use same for operating and maintenance purposes only.