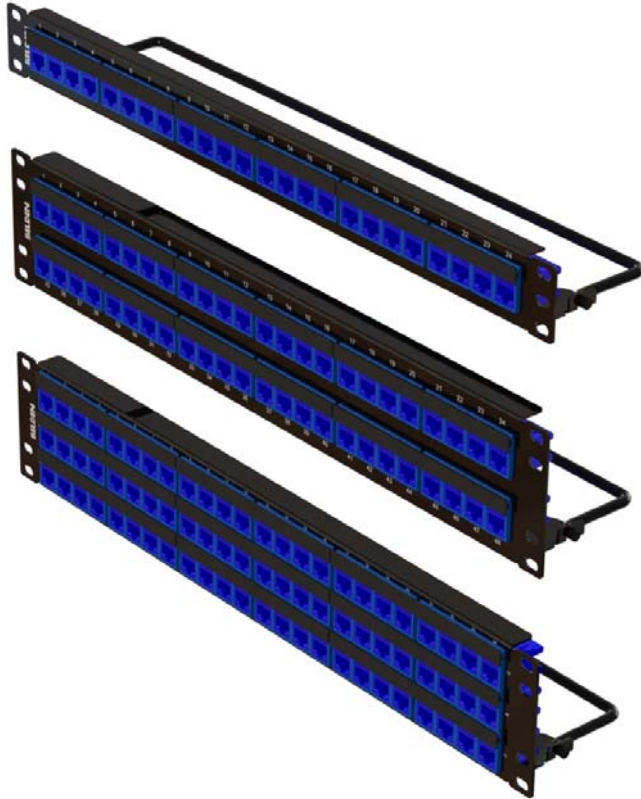


INSTALLATION GUIDE

KEYCONNECT

FRONT ACCESS PATCH PANEL



24-PORT / 1U

48-PORT / 2U

72-PORT / 2U

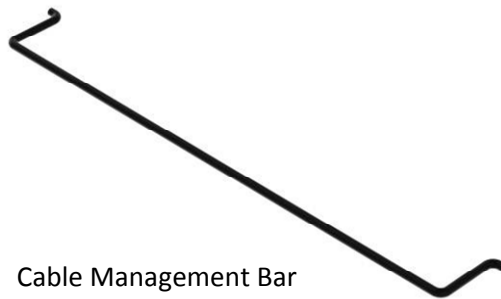
*Jacks shown as reference (not included)



Machine Screws



Bezel



Cable Management Bar

Reference Documents

Installation Guide

PX103329 – CAT5E/CAT6 Modular jacks

PX103771 – 10GX Modular jacks

PX105976 – Rapid termination tool

Belden Tools

AX101852 – Termination Station

AX100749 – 110 Connecting Tool

AX105566 – Rapid Termination Tool

1797B – Cable Preparation Tool

Standard Tools

Phillips Screwdriver

Cable Stripper

LABELING OPTIONAL KIT AX106291



LabelFlex™ Half Sheet Qty: 2
(12 stickers total)



Label Holder Strip Qty: 12

LabelFlex™ Software and printing

instruction are available in the

<http://www.silverfox.co.uk/store/belden-labelflex/patch-panel/flex-panels.aspx>

Part #	Description	Bezel	Cable Management Bar	Screw 10-32 UNC	Screw 12-24 UNC
AX106288	KeyConnect Front Access PP 24 PORT / 1U, Black (Empty)	24	1	4	4
AX106289	KeyConnect Front Access PP 48 PORT / 2U, Black (Empty)	48	1	4	4
AX106290	KeyConnect Front Access PP 72 PORT / 2U, Black (Empty)	72	1	4	4
AX106292-B24	Spare bezel kit	24	-	-	-

INSTALLATION GUIDE

KEYCONNECT

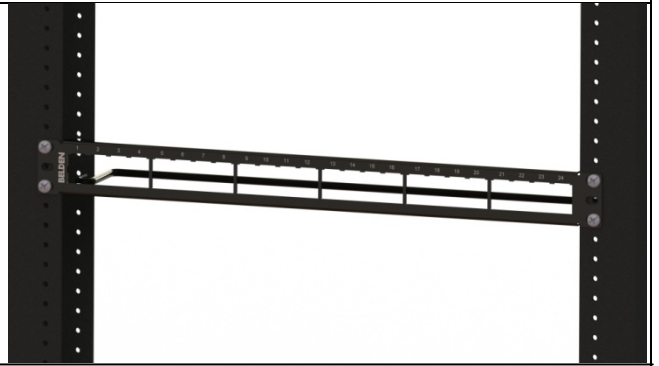
FRONT ACCESS PATCH PANEL



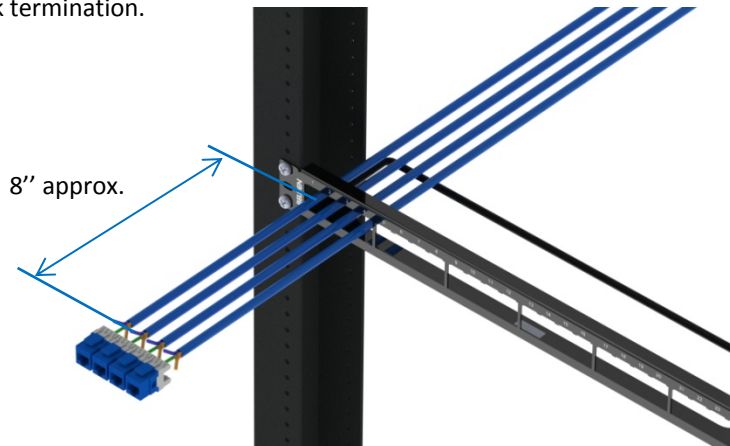
1. Insert the Cable Management Bar at the back of the Patch Panel.



2. Using appropriate screws, attach the Patch Panel into the rack.



3. Terminate the jacks with the cable passing through the Patch Panel. Keep approximately 8 inches of slack in front of the Panel for jack termination.



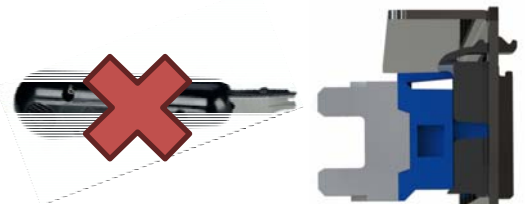
4. Jacks can be terminated in the Termination station with the 110 Connecting Tool or with the Rapid Termination Tool (components supplied separately). Make sure to terminate the jacks **BEFORE** inserting them in the Patch Panel. Refer to Jack Installation Guide: PX103329, PX103771, PX105976



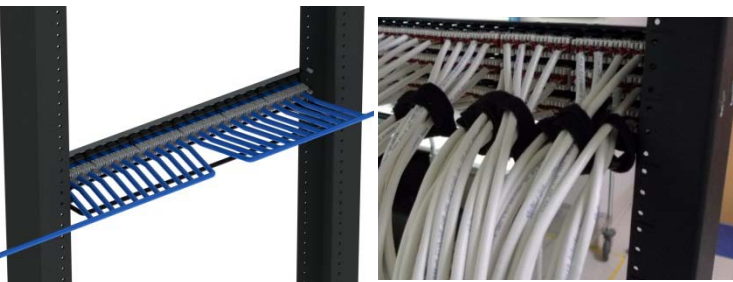
5. Insert the KeyConnect Modules in the bezels and the bezels in the Patch Panel by engaging the bottom into the opening and pivoting the latch as shown.



6. Do **NOT** terminate jacks after insertion in the Patch Panel.



7. Using the method in steps 3-4-5, continue assembling cables and inserting them in the panel from the front. Then, route the cables at the back using the Bi-Directional Cable Routing method as shown (left image). It is recommended to tie the cables in groups of 4 to keep slack and to facilitate access to the modules in the future (see right image).



In Option: Label Holder Kit AX106291. Push the Label Holder Strips in rows of 8 bezel brackets. At your convenience, put the LabelFlex on the strips, either before or after installation.

