

NP 127E

Belden® Faceplates

New design mounting hardware to complement the state-of-the-art Belden IBDN® networking system.



Belden's New Faceplates: Inserts That Can Hold Both Keystone and MDVO Modular Jacks

Belden's new 6c and Euromod faceplates range comprises modular work area components – including faceplates, inserts and adapters to complete IBDN® workstations quickly and efficiently, with the added benefit of installation flexibility, uniform aesthetics and reduced inventory.

Plenty of Choice for Maximum Flexibility

The Belden 6c range offers a choice of three faceplates, and three styles of inserts. The Euromod range will consist of Belden's first ever Euromod style, with a choice of two faceplates, and four styles of insert. Both ranges offer increased flexibility and modularity.

Helping to reduce inventory, the inserts are capable of accepting both styles of modular jack, either Keystone or MDVO style using innovative crossbar technology. This is achieved by the insertion of the red crossbar for the keystone style modular jacks, and the omission/removal for the MDVO style.

These new faceplates can be either wall-mounted on an appropriate wall back box or underfloor-mounted in floor faceplates and inserts are available in three colors white, black and cool grey.

Durability and Reliability

All Belden faceplates are designed to provide maximum durability, protection and reliable performance. They feature a sturdy design for impact resistance, while a fire-retardant VO plastic with UV stabilizers protect against color degradation. They include a shutter to protect modules from dust and debris and provide optimum performance, density and durability, while inserts and adapters are easily released for further configurations.

Label windows are situated at the top part of the faceplates, so that the cords do not block the labels. This facilitates easy identification, avoiding labels at the bottom where they could not easily be seen after installation.

With Belden Quality is Assured

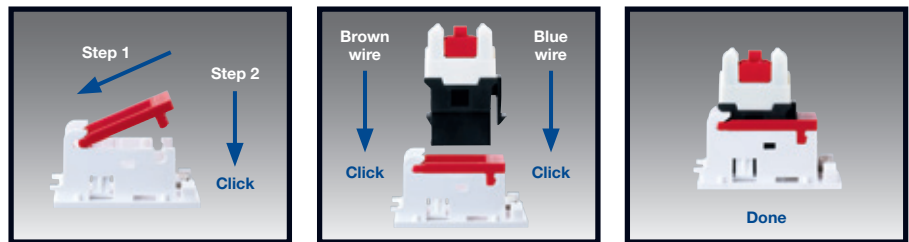
Belden Enterprise Solutions

Belden provides signal transmission solutions for virtually every area of the enterprise – from the building entrance to the rooftop, to the data center, to boardrooms, auditoriums and conference rooms, to building management and security system control rooms, and to each individual office or workstation.

To learn more about Belden's IBDN system and networking systems, visit our website at www.beldensolutions.com

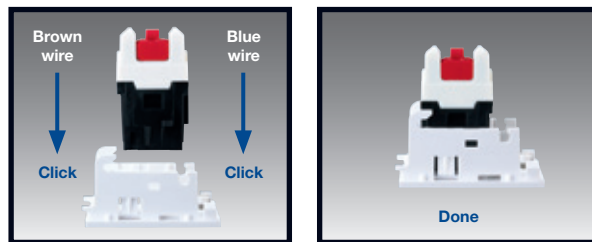
Keystone Style

To prepare the inserts for use with Keystone style, simply insert the red crossbar at the back of the outlet adapter.



MDVO Style

To prepare the inserts for use with MDVO style, simply remove the red crossbar at the back of the outlet adapter. Important: MDVO style connector cannot be separated after assembly with the adapter.



Ordering Information

Description	Belden Part Number		
	White	Black	Grey
Faceplates			
6c Faceplates			
Single Gang, Single Aperture	NN01520	NN01532	NN01544
Single Gang, Dual Aperture	NN01521	NN01533	NN01545
Double Gang, Quad Aperture	NN01522	NN01534	NN01546
Euromod Faceplates			
Single Gang, 50x50 mm Aperture	NN01523	NN01535	NN01547
Double Gang, 50x100 mm Aperture	NN01524	NN01536	NN01548
Inserts			
6c			
Shuttered Adapter, 1 Port Flush, MDVO and KeyConnect	NN01525	NN01537	NN01549
Shuttered Adapter, 1 Port Angled, MDVO and KeyConnect	NN01526	NN01538	NN01550
Blank Insert, 1 Port	NN01527	NN01539	NN01551
Euromod			
Shuttered Adapter, 1 Port Flush, MDVO and KeyConnect	NN01528	NN01540	NN01552
Shuttered Adapter, 1 Port Angled, MDVO and KeyConnect	NN01529	NN01541	NN01553
Blank Insert, 12.5x50 mm	NN01530	NN01542	NN01554
Blank Insert, 25x50 mm	NN01531	NN01543	NN01555