




INDUSTRIAL HiVISION

NETWORK MANAGEMENT SOFTWARE WITH SECURITY CAPABILITIES

-  Improve **network uptime and security**
-  **Save time** and increase productivity
-  Catch errors early and **reduce risks**

Key Features

- Offers a no-cost, fully functional 16-node trial version that you can use as long as you like. Download it today from www.hivision.de and learn just how powerful this product is
- Provides at-a-glance visibility of key network performance and security indicators with a visual Network Dashboard
- Configures hundreds of SNMP-enabled devices from any manufacturer simultaneously, not just those from Hirschmann and GarrettCom, using a powerful MultiConfig feature
- Integrates all SNMP-enabled devices into the management system, including any device-specific properties
- Recognizes and accurately visualizes network topology automatically
- Generates alerts when unauthorized changes are made, rogue devices are added or MAC/IP address pairs change
- Applies security functions with just a couple of clicks through its security lockdown feature



Industrial HiVision is available as a free of charge fully functional version with no time limit, supporting up to 16 devices. You can download it from www.hivision.de.

Be certain.
Belden.

INDUSTRIAL HiVISION

NETWORK MANAGEMENT SOFTWARE WITH SECURITY CAPABILITIES

Customer Benefits

Simplify Your Work

Using MultiConfig, you can simultaneously configure SNMP-enabled devices from any vendor – both when commissioning the system and while devices are in operation.

Always Know the Status of Your Network

The Network Dashboard provides an easy-to-view summary of key network health indicators and alerts you to concerns. Now, you no longer have to look through multiple network maps to spot problems. Customize the Network Dashboard to meet your specific network supervision needs by adding or removing widgets to show the indicators of your choice.

Enhance Security and Reduce Risk

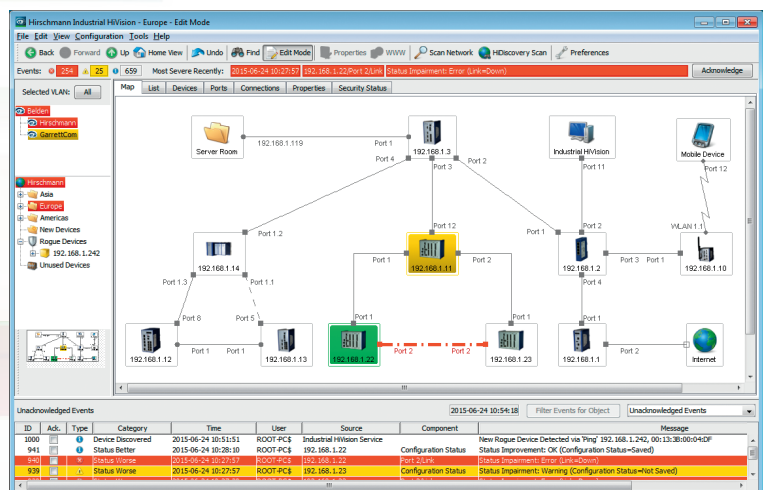
Industrial HiVision provides an overview of the current state of each device, showing exactly where security functions should be used. Plus, it scans periodically for new devices on the network. User roles control access to the network by granting different levels of access rights.

Applications

Industrial HiVision can be used wherever networks have to meet high availability and security requirements. In addition, it can be implemented with minimal IT knowledge or assistance.

Markets

- Power & Utility
- Oil & Gas
- Water/Wastewater
- Transportation
- Factory Automation
- All industrial facilities with high availability industrial Ethernet networks



Industrial HiVision is a proven network management solution used at thousands of facilities around the world. Its Network Dashboard and powerful MultiConfig feature improve productivity, security and network uptime.