

Belden Deutschland GmbH • Im Gewerbepark 2 • 58579 Schalksmühle

Supplement to Product Change Notification PCN-2016-02-17

28.06.2018

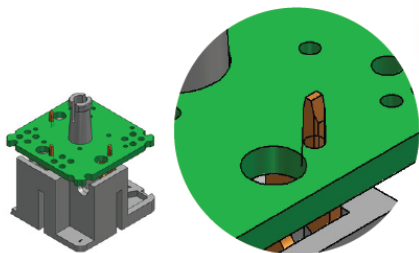
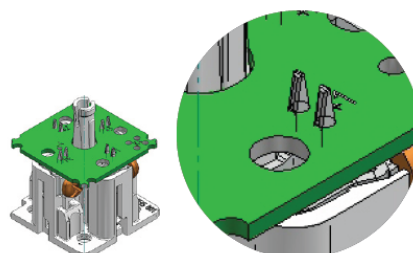
Dear Valued Customer,

in order to meet the latest market and technology trends, we are constantly refining products in regards to innovation and high quality. In this context, Belden has modified the contact carriers and circuit boards of their GDM standard valve connectors type A in 2016. For further information regarding the changes made please read the product change notification [PCN-2016-02-17](#).

In the course of PCN-2016-02-17 there was also a change of circuit boards which lead to a modification of defined electronic parts with which the PCB is fitted. As this has led to further inquiries in the past we would like to use this document to further address the changes made and to point them out in more detail. Thus this letter supplements an already existing product change notification however does not contain any new changes.

PCB Technology, Contacting (double PressFit) and Protective Circuitry

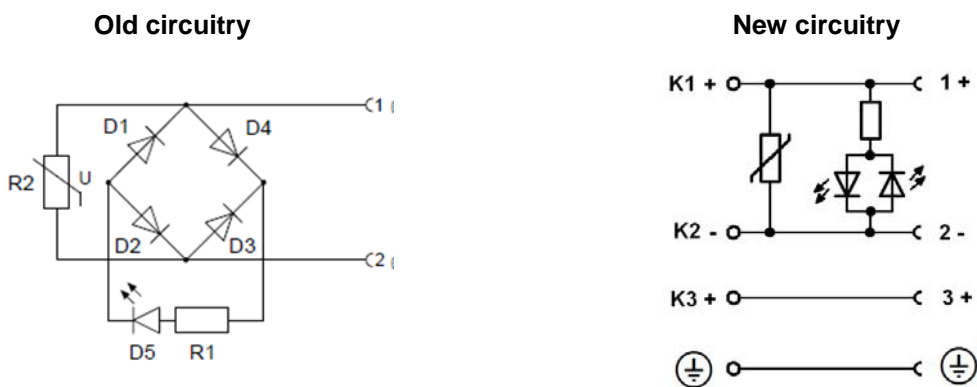
In order to match the latest PCB technology for all our circuits, Belden redesigned the PCB-assembling and the connection to the contact-bearer. To guarantee a better vibration-behavior and reliability of contact resistance and joints, the design has been up-graded to a double PressFit connection.

Old version**New version**

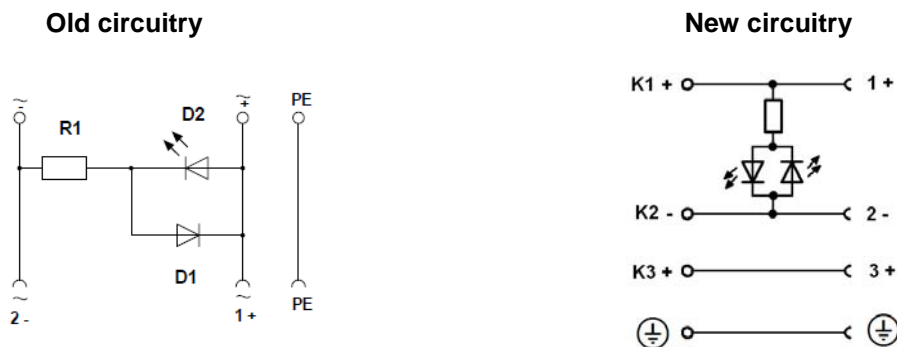
Belden Deutschland GmbH • Im Gewerbepark 2 • 58579 Schalksmühle

In the course of the PCB improvement defined protection circuitries were modified as well. So far bridge rectifiers and blocking diodes were used in combination with light-emitting diodes (LED) to ensure the functionality of the LED also with alternating current. At the same time reverse polarity protection was ensured with an antiparallel diode. In the scope of PCN-2016-02-17 the previous monopolar LEDs were replaced by bipolar LED versions, which can be operated with direct as well as with alternating current. A prior rectification is thus no longer necessary. Also, with the bipolar light-emitting diodes the risk of polarity reversal is no longer given as they enable a flexible connection. Due to the replacement of former monopolar LEDs by bipolar light-emitting diodes the following new circuit diagrams emerge:

GDML 2016 LED 24 GB black or grey as well as GDML 2011 LED 24 GB black or grey



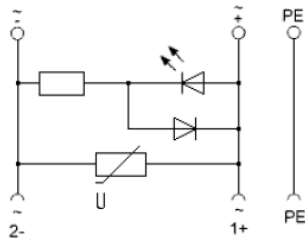
GDML 2016 LED * (YE) black or grey as well as GDML 2011 LED * (YE) black or grey



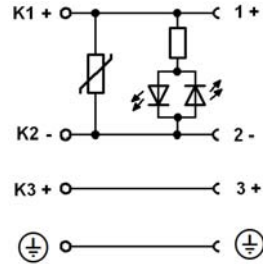
Belden Deutschland GmbH • Im Gewerbepark 2 • 58579 Schalksmühle

GDML 2016 LED * VR (YE) *black or grey* as well as GDML 2011 LED * VR (YE) *black or grey*

Old circuitry



New circuitry



Please find a complete list of all affected articles as well as their material number and article description at the end of this document. For further queries please don't hesitate to contact us.

<u>Name</u>	<u>Phone</u>	<u>Fax</u>	<u>Email</u>
Nina Baur	+49-7127-14-1681	+49-7127-14-1125	Nina.Baur@Belden.com

With kind regards

i. V. Joachim Kiera
Senior Manager Product Manager

i.A. Nina Baur
Junior Product Manager

Belden, Belden Sending All The Right Signals, Hirschmann, GarrettCom, Tofino Security, Lumberg Automation and the Belden logo are trademarks or registered trademarks of Belden Inc. or its affiliated companies in the United States and other jurisdictions. Belden and other parties may also have trademark rights in other terms used herein.

Belden Deutschland GmbH • Im Gewerbepark 2 • 58579 Schalksmühle

Affected products

Material number	Article description
934411002	GDML 2016 LED 24 GB black
934411003	GDML 2016 LED 24 GB grey
932501003	GDML 2011 LED 24 GB grey
932501002	GDML 2011 LED 24 GB black
934412002	GDML 2016 LED 24 black
934412003	GDML 2016 LED 24 grey
934413002	GDML 2016 LED 24 YE black
934423002	GDML 2016 LED 120 YE black
934423003	GDML 2016 LED 120 YE grey
934425002	GDML 2016 LED 230 YE black
934425003	GDML 2016 LED 230 YE grey
932332003	GDML 2011 LED 24 grey
932332002	GDML 2011 LED 24 black
932527002	GDML 2011 LED 24 YE black
932527003	GDML 2011 LED 24 YE grey
933738212	GDML 2011 LED 120 YE black
933738712	GDML 2011 LED 120 YE grey
933739212	GDML 2011 LED 230 YE black
933739712	GDML 2011 LED 230 YE grey
934418002	GDML 2016 LED 24 VR black
934417002	GDML 2016 LED 24 VR YE black
934417003	GDML 2016 LED 24 VR YE grey
934420002	GDML 2016 LED 48 VR black
934421002	GDML 2016 LED 48 VR YE black
934424002	GDML 2016 LED 120 VR YE black
934424003	GDML 2016 LED 120 VR YE grey
934426002	GDML 2016 LED 230 VR YE black
934426003	GDML 2016 LED 230 VR YE grey
932521002	GDML 2011 LED 24 VR black
933737212	GDML 2011 LED 24 VR YE black
933737712	GDML 2011 LED 24 VR YE grey
933924212	GDML 2011 LED 48 VR black
933924712	GDML 2011 LED 48 VR grey
933926212	GDML 2011 LED 48 VR YE black
933916212	GDML 2011 LED 230 VR YE black
933916712	GDML 2011 LED 230 VR YE grey

Belden Deutschland GmbH • Im Gewerbepark 2 • 58579 Schalksmühle

28.06.2018

Dear Valued Customer,

this letter serves as your formal notification that Belden is discontinuing selected Hirschmann valve connectors type A. For each discontinued article we'd like to offer you two alternative products: An alternative out of our second generation GDM valve connectors (2G), as well as an alternative out of our newest, third generation which corresponds to the discontinued product regarding functionality and compatibility however profits from an improved housing design. Please read the attached [product flyer](#) for more information regarding our third generation of GDM valve connectors type A.

End-of-Life (EOL) Products

End-of-Life Product (EOL)	Description EOL-Product	2G Alternative	Description 2G Alternative	3G Alternative	Description 3G Alternative
GDML 2016 LED 24 GB black # 934411002	Valve connector type A with red LED and varistor, black M16 cable gland	GDML 2016 LED 24 VR black # 934418002	Valve connector type A with red LED and varistor, black M16 cable gland	GDM21F6-V24-10D # 934888034	Valve connector type A with yellow LED and varistor, black M16 cable gland
GDML 2016 LED 24 GB grey # 934411003	Valve connector type A with red LED and varistor, grey M16 cable gland	GDML 2016 LED 24 VR black # 934418002	Valve connector type A with red LED and varistor, black M16 cable gland	GDM21F6-V24-10D # 934888034	Valve connector type A with yellow LED and varistor, black M16 cable gland, please ask for grey
GDML 2011 LED 24 GB black # 932501002	Valve connector type A with red LED and varistor, black PG11 cable gland	GDML 2011 LED 24 VR black # 932521002	Valve connector type A with red LED and varistor, black PG11 cable gland	GDM21FB-V24-10D # 934888148	Valve connector type A with yellow LED and varistor, black PG11 cable gland
GDML 2011 LED 24 GB grey # 932501003	Valve connector type A with red LED and varistor, grey PG11 cable gland	GDML 2011 LED 24 VR black # 932521002	Valve connector type A with red LED and varistor, black PG11 cable gland	GDM21FB-V24-10D # 934888148	Valve connector type A with yellow LED and varistor, black PG11 cable gland, please ask for grey

The standard warranty terms will be honored for all units shipped to date. For more information on Belden's Long Term Product Support Policy for Industrial Networking products, please visit <https://www.belden.com/resources/technical-resources?type=long-term-product-support>. Special contracts in place and active prior to the announcement date will be honored according to the terms of that contract, with regard to product availability, warranty, or support terms.

Belden Deutschland GmbH • Im Gewerbepark 2 • 58579 Schalksmühle

Discontinuation – Timeline

Milestones	Date
Discontinuation Announcement Date	June 28, 2018
Last Order Date	September 28, 2018
Last Shipment Date	November 30, 2018

If you have any questions or for assistance selecting alternative products, please contact your local Belden sales representative ([North America contact information and International contact information](#)).

Sincerely,

Belden Deutschland GmbH



i.V. Joachim Kiera
Belden Deutschland GmbH
Senior Manager Product Management



i.A. Nina Baur
Belden Deutschland GmbH
Junior Product Manager

Belden, Belden Sending All The Right Signals, Hirschmann, GarretCom, Tofino Security, Lumberg Automation and the Belden logo are trademarks or registered trademarks of Belden Inc. or its affiliated companies in the United States and other jurisdictions. Belden and other parties may also have trademark rights in other terms used herein.