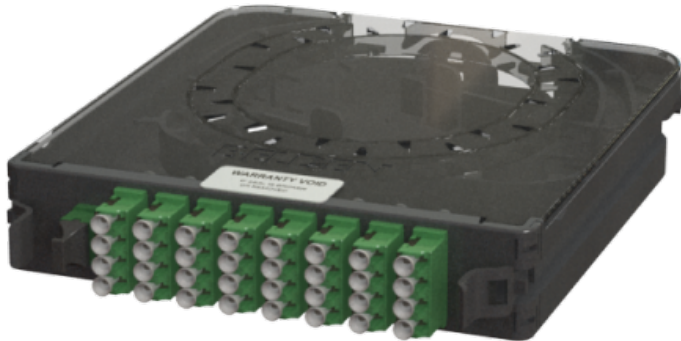


**SCSX4208MLF Faceplates and Panels - FX ECX SPLITTER**

Preview Document. Not Live Data.

For more Information  
please call  
1-800-Belden1



**Description**

FX ECX SPLITTER CASSETTE, OS2, 4 SPLITTER, 2 X 8, MPO/APC INPUT, LC-SX/APC OUTPUT, FRONT

**Usage (Overall):**

Suitable Applications: FiberExpress Solutions, Backbone, Telecommunications Room, Main Distribution Room  
Passive Optical Lan

Related Parts: FX ECX Housings (4U, 2U, 1U), ECX Splice Cassettes, Patch Cords

**Physical Characteristics (Connectivity):**

**Capacity:**

Max. Capacity: 8 Fibers (Output)

**Access:**

Front Connection: Static

Termination Area: Front

**Dimensions:**

Dimensions

Height (in.)	Width (in.)	Length (in.)
1.300	6.340	8.740

**Materials:**

Materials

Description	Type	Material	Color
Housing	N/A	PC/ABS	Black
Cover	N/A	Polycarbonate	Clear-Light Smoke
Frame	Lead Frame	PC/ABS	Black
Adapter Ouput	LC-Quad w/ Internal Shutters	Plastic - UL94V-0	Green
Adapter Input	MPO Adapter	Plastic - UL94V-0	Green

**Weight:**

Weight: 0.600 lbs.

**SCSX4208MLF Faceplates and Panels - FX ECX SPLITTER**

**Packaging:**

Packaging Individually packaged in a plastic shell, Shipped in cardboard box (12/box)

**Mechanical Characteristics (Connectivity):**

Storage Temperature Range -10°C To +60°C  
Operating Temperature Range -10°C To +60°C

**Applicable Specifications and Agency Compliance (Overall):**

**Applicable Standards & Environmental Programs:**

EU RoHS Compliance Date (mm/dd/yyyy) 01/01/2013  
MII Order #39 (China RoHS) EUP 50  
Telecommunications Standards Telcordia GR-1209-CORE (splitters only), Telcordia GR-1221-CORE (splitters only)

**Suitability:**

Suitability - Indoor Yes

**Transmission Characteristics (Connectivity):**

Transmission Specifications

Splitter Config.	IL (dB)	Uniformity (dB)	PDL (dB)	Directivity (dB)	RL (dB)
1 x 8	10.700	1.100	0.300	55	55
1 x 16	14.100	1.400	0.300	55	55
1 x 32	17.000	1.700	0.400	55	55
2 x 8	11.200	1.700	0.400	55	55
2 x 16	14.700	2.100	0.400	55	55
2 x 32	18.200	2.500	0.500	55	55

**Notes (Overall):**

Notes Specifications do not include connector loss

**Product Family:**

Part Numbers

Item #	Description
SCSX1208SLF	ECX SPL CASS OS2 1S 2 X08 SC/APC LC_SX/APC FRONT
SCSX1216SLF	ECX SPL CASS OS2 1S 2 X16 SC/APC LC_SX/APC FRONT
SCSX2208SLF	ECX SPL CASS OS2 2S 2 X08 SC/APC LC_SX/APC FRONT
SCSX4208MLF	ECX SPL CASS OS2 4S 2 X08 MPO/APC LC_SX/APC FRONT
SCSX4108LLF	ECX SPL CASS OS2 4S 1 X08 LC/APC LC_SX/APC FRONT
SCSX2216LLF	ECX SPL CASS OS2 2S 2 X16 LC/APC LC_SX/APC FRONT
SCSX2116SLF	ECX SPL CASS OS2 2S 1 X16 SC/APC LC_SX/APC FRONT
SCSX1232SLF	ECX SPL CASS OS2 1S 2 X32 SC/APC LC_SX/APC FRONT
SCSX1132SLF	ECX SPL CASS OS2 1S 1 X32 SC/APC LC_SX/APC FRONT

Revision Number: 0 Revision Date: 05-23-2017

© 2018 Belden, Inc  
All Rights Reserved.

Although Belden makes every reasonable effort to ensure their accuracy at the time of this publication, information and specifications described herein are subject to error or omission and to change without notice, and the listing of such information and specifications does not ensure product availability. Belden provides the information and specifications herein on an "AS IS" basis, with no representations or warranties, whether express, statutory or implied. In no event will Belden be liable for any damages (including consequential, indirect, incidental, special, punitive, or exemplary damages) whatsoever, even if Belden has been advised of the possibility of such damages, whether in an action under contract, negligence or any other theory, arising out of or in connection with the use, or inability to use, the information or specifications described herein. All sales of Belden products are subject to Belden's standard terms and conditions of sale.